



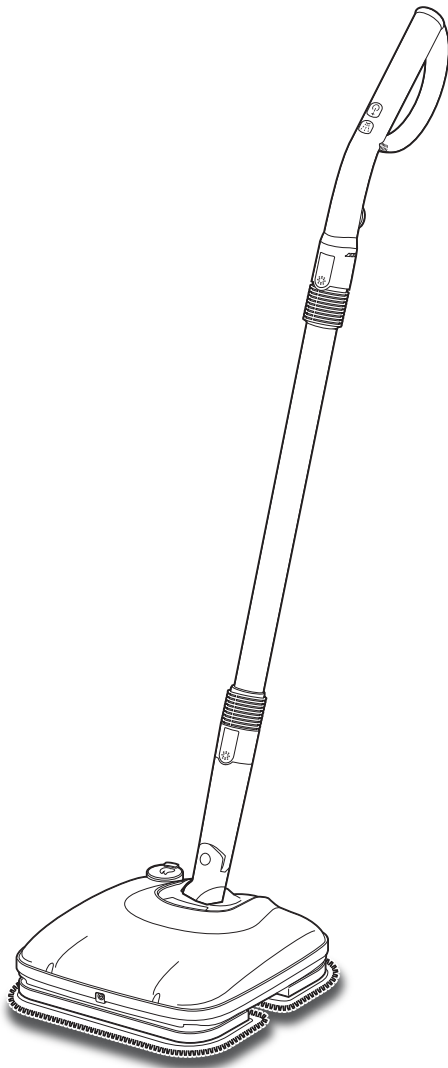
IRIS OHYAMA

Indoor/Household Use Only

Rechargeable Mop Cleaner

IC-M01

User manual



Content

Preparations

Safety precautions	2
Precautions for use	4
Parts	5

Operation instructions

Assembly	7
Charging the battery	8
Preparation	9
How to use	9
Cleaning and maintenance	11
Removing the battery (when disposing of the product)	12

Others

Troubleshooting	13
Specifications	14
Warranty and after-sales services	15
Warranty card	Back cover

Safety precautions

Carefully read the following "safety precautions" before using. Rules which must be abided by in order to prevent avoidable personal injury or damage to property are described here.

Example of symbols



This symbol means "reminding".



This symbol means "forbidden".



This symbol means necessary "instructions".



Danger

Indicates content where improper usage carries a high risk of death or serious injury.

Important notes about the battery



Do not disassemble

- **Do not disassemble the battery**
- **Do not change the battery**
Doing so may cause the battery to heat up and rupture, causing fire or injury.
Do not remove the battery except when disposing of the product.



Prohibited

- **Do not charge the battery in a way other than what is specified**
- **Do not charge the battery in locations with high temperatures or exposure to direct sunlight**
- **Do not throw the battery into fire or otherwise heat it up in any way**
- **Do not drop the battery from high places, throw the battery, pierce the battery with nails, strike the battery with a hammer, or trample the battery**
- **Keep the battery from getting wet**
Not doing so may cause the battery to heat up, rupture, and leak fluid, which may cause fire, injury, or contamination of the surrounding environment.



Warning

Indicates content where improper usage carries a risk of death or serious injury.



Do not disassemble

- **Do not disassemble, repair or modify this product**
Doing so may result in fire, electrical shock or injury.
Contact the store where you purchased the product, or contact the IRIS customer service center.



Do not touch

- **Do not touch power spin board when in operation**
Doing so may cause injury.



Unplug the product

- **In case of abnormalities or malfunctioning, you should immediately stop using and unplug the charging adapter from the power socket**
Not doing so may result in smoke, fire or electrical shock.
[Examples of abnormalities]
 - **Smell of scorching or abnormal sounds**
 - **Abnormal heating up of the charging adapter**
 ➔ Stop using and contact the store where you purchased the product, or contact the IRIS customer service center.



Prohibited

- **Do not sit or lean on the product**
Doing so may cause injury or malfunction.
- **Do not use on towels or clothing**
Doing so may overheat the unit and cause fire.
- **Do not allow children to use the product by themselves**
Doing so may cause injury.
- **Do not use near anything that falls over easily or breaks easily**
Doing so may cause injury or malfunction.



Avoid getting the product wet

- **Do not put the mop head or the charging adapter in water, or get wet**
Doing so may cause fire or electrical shock.



Prohibited

- **Do not use near flammable items (insecticides, hair products, lubricating oils, kerosene, gasoline thinners and etc.)**
Doing so may cause fire.



Prohibited

- **Do not plug or unplug the charging adapter with wet hands**
Doing so may result in electrical shock, burns or injury.

Use the charging adapter



Be sure to

- **Product must be used with the accompanying charging adapter**
If the product gets connected to other charging adapters, or if the charging adapter gets connected to other products, it may cause fire or malfunction.
- **Periodically clean off dust and dirt from the charging plug**
Dust buildup and humidity can cause the insulation to fail, and cause fire or electrical shock.
- **Insert the charging plug firmly, all the way into the power socket**
Not doing so may cause fire or electrical shock due to a short circuit.



Avoid getting the product wet

- **Do not plug or unplug the charging adapter with wet hands**
Doing so may result in electrical shock, burns or injury.



Prohibited

- **Do not use if the charging adapter is damaged or if it does not plug into the power sockets firmly**
Doing so may cause fire or electrical shock due to a short circuit.
- **Use power sockets that have a rating of 15A and a voltage of 100~240V, and use the product by itself without anything else plugged in**
Using this product in combination with other devices may cause it to overheat, which could then cause fire or malfunctioning.
- **Do not allow infants or young children to lick the charging adapter**
Doing so may cause injury or electrical shock.
- **Do not damage, forcefully bend, pull, twist, squeeze, place heavy objects on, or pinch the charging cord**
Doing so may damage the charging cord, and cause fire or electrical shock.

Important notes about the battery



Be sure to

- **In the event of electrolyte leakage or unpleasant odors, immediately distance the product from all sources of fire**
Doing so may cause fire.
- **If battery fluids accidentally come into contact with skin or clothing, immediately wash with water**
Not doing so may cause skin irritation or damage to clothing.



Prohibited

- **In the event of electrolyte leakage or unpleasant odors, do not use**
Doing so may cause overheating, fire, or contamination of the surrounding environment.
- **Keep the battery out of reach of infants and young children**
Not doing so may cause electrical shock or injury.



Caution

Indicates content where improper usage carries a risk of personal injury or damage to property.



Prohibited

- **Do not use for any purpose other than cleaning**
Doing so may cause malfunctioning or fire.
- **This product was designed for household use only**
Do not use this product for commercial purposes. Doing so may cause fire.



No fire

- **Keep away from all sources of fire**
Doing so may cause fire or short circuiting due to deformation of the mop head.



Prohibited

- **Do not use on rugs, carpets, mats, etc.**
Doing so may cause power spin board to stop, and cause malfunctioning.
- **Do not peer into the nozzle**
Or liquid that gets sprayed out may get on your face or in your eyes.
- **Do not block the nozzle**
Doing so may cause malfunctioning.



Prohibited

- **Do not drop the product or strike it with heavy blows**
Doing so may cause injury or malfunctioning.
- **Do not store in places with high temperatures or high humidity**
Doing so may cause electrical shock due to deterioration in the insulation.
- **Throw out the water in the water reservoir after use**
Not doing so may cause putrefaction or clogging.
- **Do not leave wet mop pads attached to the mop**
Doing so may cause discoloration or deterioration of the floor.



Prohibited

- **Do not turn on the power while the battery is charging**
Doing so may cause an accident or malfunction.
- **Do not push down forcefully or force to stop**
Doing so may damage the floor or furniture. It may also damage the mop head and cause malfunctioning.

Safety precautions Continued



Unplug the product

- **When unplugging the charging adapter, be sure to unplug by holding the charging adapter itself; do not pull on the power cord**
Doing so may damage the cord and cause fire or electrical shock.
- **Unplug the charging adapter from the power socket after each use**
Not doing so may cause fire or electrical shock.



Be sure to

- **When plugging in or unplugging the charging adapter, make sure that the swivel is vertical (power is switched off)**
Not doing so may cause electrical shock or malfunction.



Be sure to

- **Make sure to attach the mop pads before using**
Not doing so may damage the floor or furniture. It may also damage the mop head of the product and cause malfunctioning.
- **When placing the mop head in an upright position, place on a level surface so that it will not fall over**
Not doing so may cause injury or damage.
- **Do not insert your fingers into the gap in the swivel**
Doing so may cause injury.
- **Do not use within the reach of infants or young children**
- **Do not let children play with this product**
Doing so may cause injury.

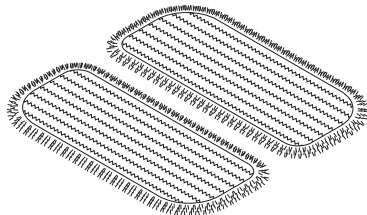
Precautions for use

- **Do not use on floor surfaces which are not suitable for wiping and cleaning with water. Also, avoid using on delicate materials or expensive items.**
- **Do not use cleansers (such as sprays) that are for chemically treated dust cloths.**
Doing so may cause deterioration in performance or malfunctioning.
- **Do not use anything other than the mop pads on this unit**
- **Frequently clean and maintain the mop pads**
Continuing to use while dirty will reduce the mop's ability to clean.
- **Do not use if there are hard or abrasive bits of trash or sand stuck to the mop**
Doing so may damage the floor.
- **Because the mop pads absorb oil easily, they can end up darkening. This will not cause any problems in using it.**
- **Do not place the mop head on surfaces such as carpets if the Mop Pads have been removed.**
Or the attachment surface will get entangled with the carpet, fur / tassels and may damage the carpet linen / carpet fur.
- **When replenishing water, use the attached measuring cup to measure out the water, and do not exceed 90ml.**
Or the water may overflow and cause malfunctioning.
- **Do not put any liquids other than tap water (such as mineral water or cleaning solution) into the water reservoir.**
Doing so may cause malfunctioning in the nozzle.

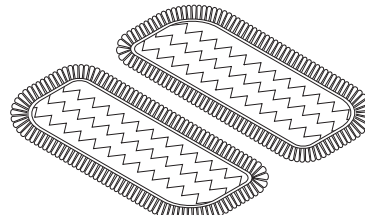
Consumable parts

- Please contact retail shop for mop pads (sold separately).

Soft pads
(sold separately)
MC-S01



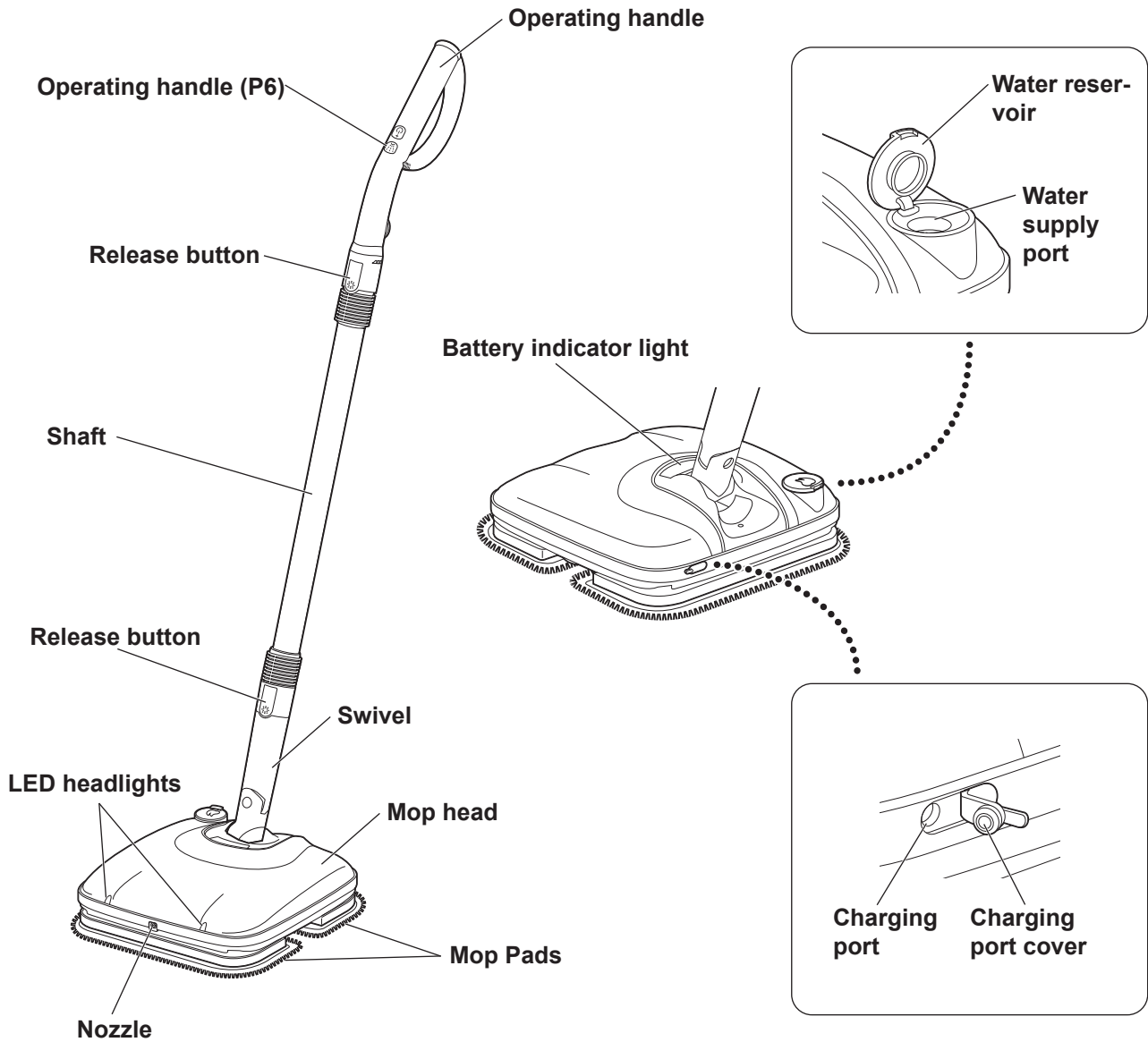
Scrubby pads
(sold separately)
MC-P01



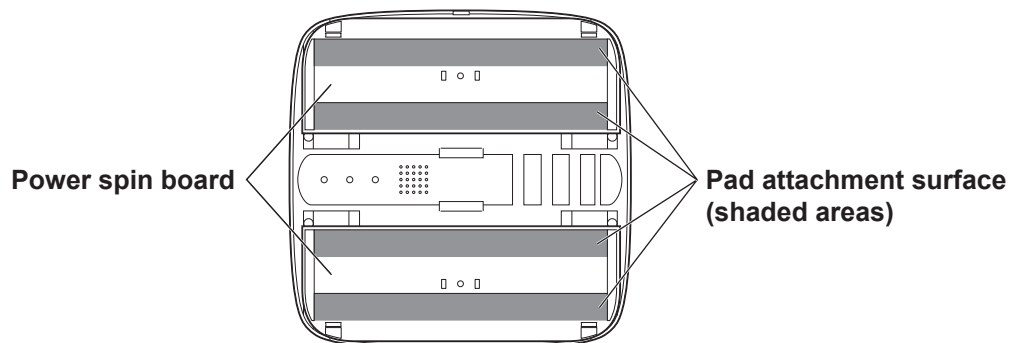
- The soft mop pad is mainly used to wipe with the water.
- The scrubby mop pad is mainly used to wipe with a dry floor or wipe off the water on the wet floor.

Parts

■ Main unit



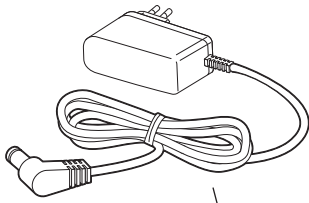
■ Back of the mop head



Parts Continued

Accessories

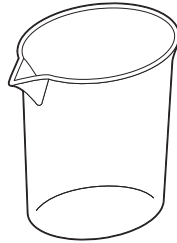
Charging adapter



Charging plug

Charging cord

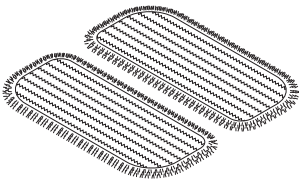
Measuring cup



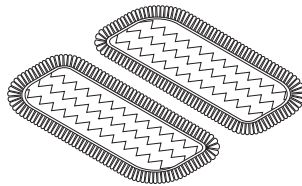
Pin for cleaning the nozzle



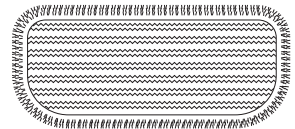
Soft pads
(2 pads)



Scrubby pads
(2 pads)



Cleaning side

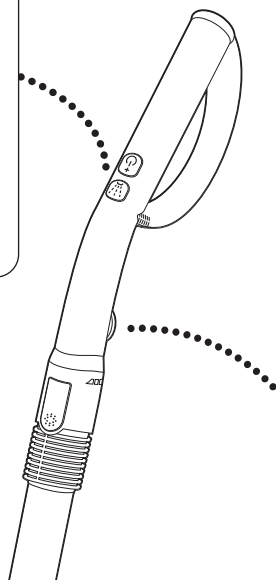
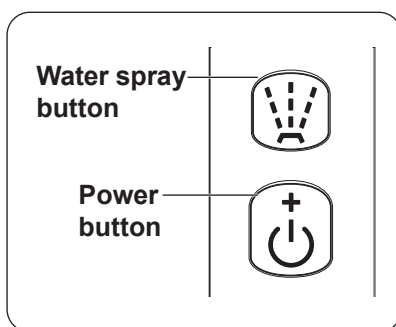


Attaching side



※ Place the pads on the ground with cleaning side facing down. Then, place the machine on top of the pads and push firmly down.

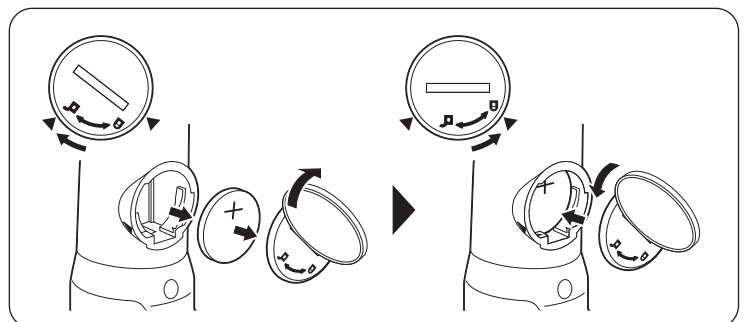
Operating handle



Replacing the handle battery

※ If power button does not turn on the machine, the handle battery may have ran out. Replacement of battery may be necessary.

- 1 Using a small coin, turn clockwise to open the cover.
- 2 Replace the battery (CR2032), and turn counter-clockwise to close the cover.

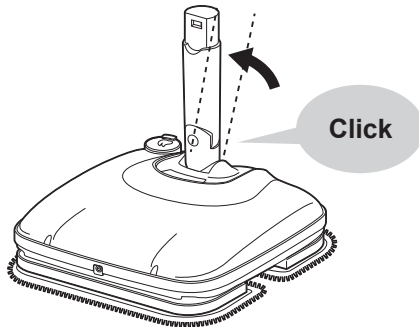


Assembly

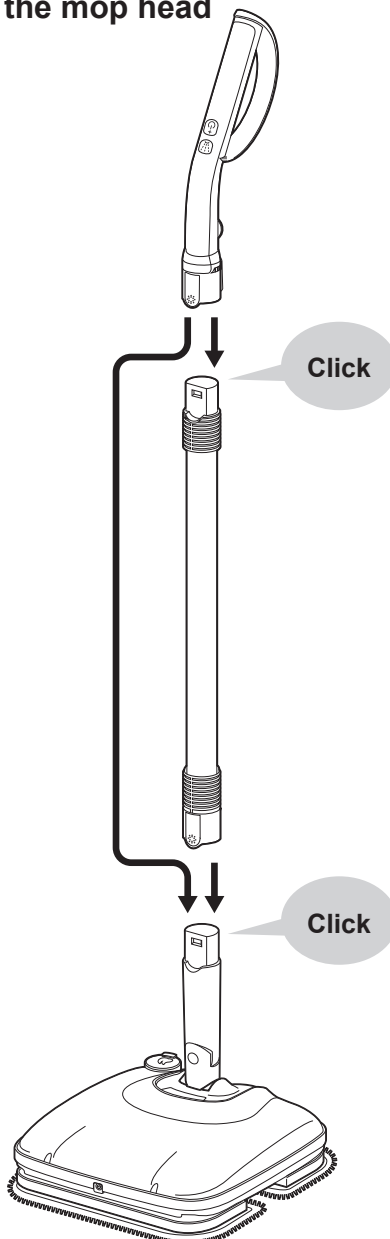
■ Assembly

How to assemble

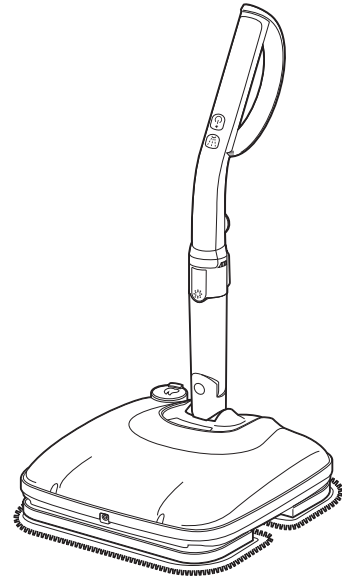
- 1** Stand the product up vertically until you hear the Swivel make a "clicking" sound



- 2** Connect the shaft to the operating handle and to the mop head

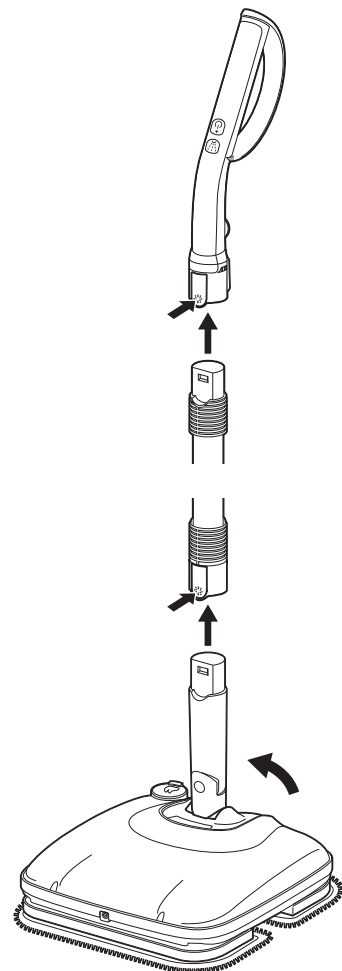


- Remove the shaft, the operating handle can be directly connected to the mop head.



How to remove

- To remove the assembled operating handle, shaft, and mop head, put the swivel in a vertical upright position, turn the power to "off", pull and remove while pressing down on the release button.



Charging the battery

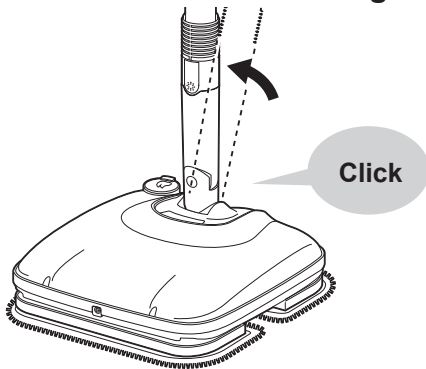
How to charge

● When using for the first time or when using over a long period, battery must be put on charge. It takes 5 hours to charge up completely. (The charging time may be shorter depending on how much power is remaining in the battery.)

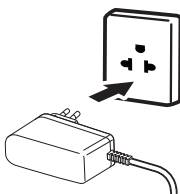


- Do not plug in or unplug the charging adapter / charging plug with wet hands.
- Do not operate while the battery is still charging.
Doing so may cause electrical shock or a short circuit.

1 Stand the product up vertically until you hear the swivel make a "clicking" sound



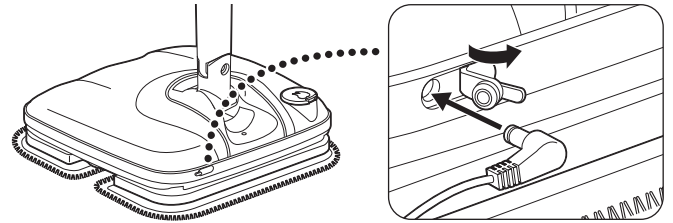
2 Insert the charging adapter securely into the socket



3 Connect the charging plug to the mop head

Pull open the charging port cover on the mop head, and then insert the charging plug into the port.

- Once the charging plug has been plugged in, the battery indicator light will light up, and it will start charging.

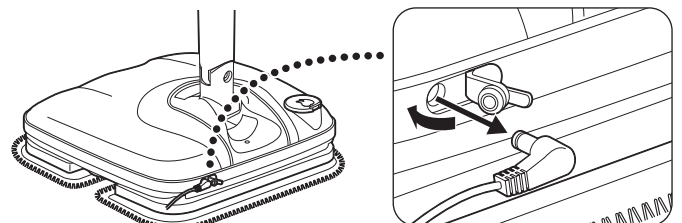


	Battery indicator light	Status
Right after plugging in the Charging plug	 Indicator lights turn on in order	Checks to see how much power is remaining in the battery, and to see if there is anything abnormal.
Charging	 Flashes	Once the check is complete, the battery will start charging. ※ The location of the flashing indicator lights may move depending on how much power is remaining in the battery.
Charging complete	 All indicator lights are on.	All indicator lights are on. ※ After the battery is fully charged and 30 minutes have passed, the battery indicator lights will turn off.

※ When the charging plug is connected, the power will not turn on even if the swivel is pushed down.

4 After the battery has been charged, unplug the charging plug from the mop head, and unplug the charging adapter from the socket

- Close the charging port cover on the mop head.

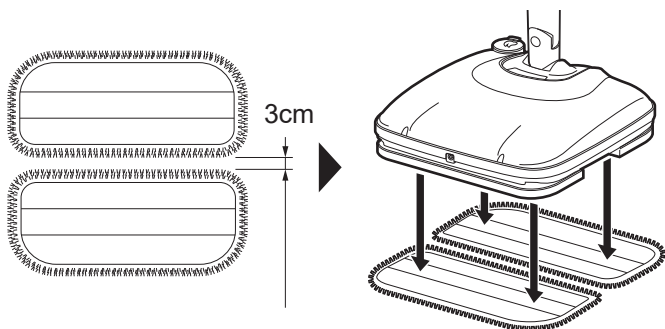


- The charging port cover must be closed after the battery has been charged. Or dust and dirt may get into the charging port, causing fire or malfunction.

Preparation

■ Attaching the mop pads

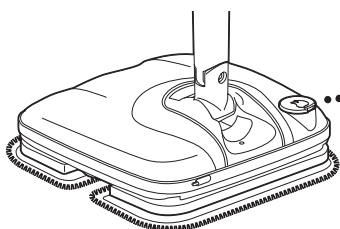
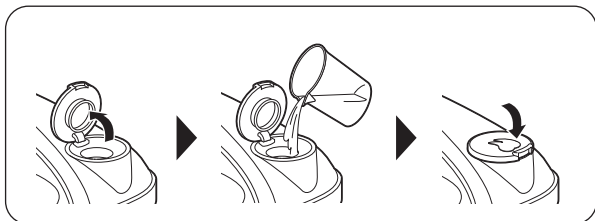
- 1 Open the mop pads, leaving a space of about 3cm, and place them parallel to the floor.
- 2 Press down on the mop head from above to attach the mop pads.



- Do not press down forcefully on the Mop head. Doing so may cause injury or malfunction.

■ Putting water in the water reservoir

- 1 Open the water reservoir.
- 2 Use the measuring cup to put tap water in the water reservoir.
 - Do not put more than 90ml. of water into the Water Reservoir.
- 3 Close the water reservoir tightly.

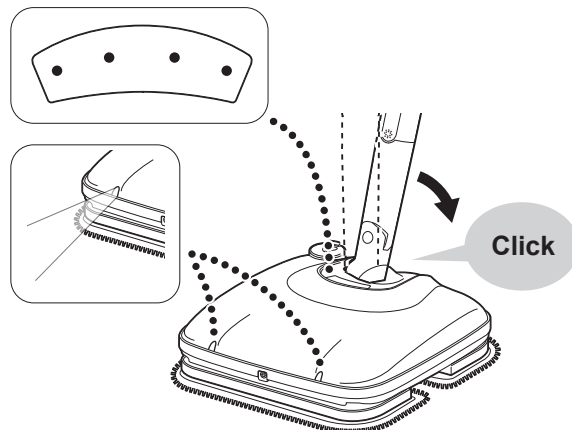


- Do not put any liquids other than tap water (such as mineral water or cleaning solution) into the water reservoir. Doing so may cause malfunctioning in the nozzle.

How to use

- 1 Place the mop head on the floor that you want to clean, and push the swivel into place until hearing it "click"

- Turn on the power, and then the battery indicator lights and the LED headlights will light up.



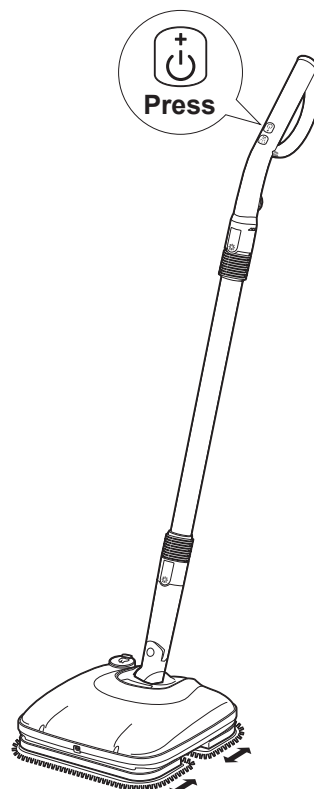
- ※ If you go for 3 minutes without operating the product while the power is turned on, the power will shut off automatically.

When resuming operation, stand the swivel back up vertically and then push it down once again.

- 2 Press the start button

Press the start button, and the mop pads will begin moving back and forth.

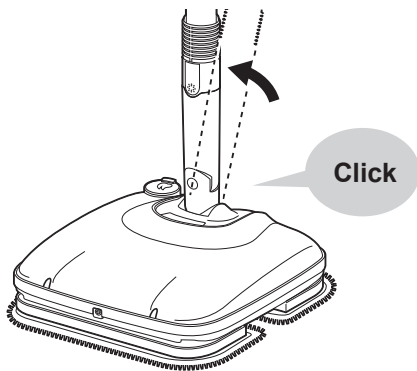
- Whenever this button is pressed, the mode gets switched from "high" to "low" to "stop" and then back to "high."
- When the mop pads is moving, move the mop head forward and back slowly without using excessive force.



Continued →

3 Once cleaning is complete, stand the swivel up vertically until there is a "clicking" sound, and turn off the power

- Once the power has been turned off, the battery indicator lights and the LED headlights will go out.



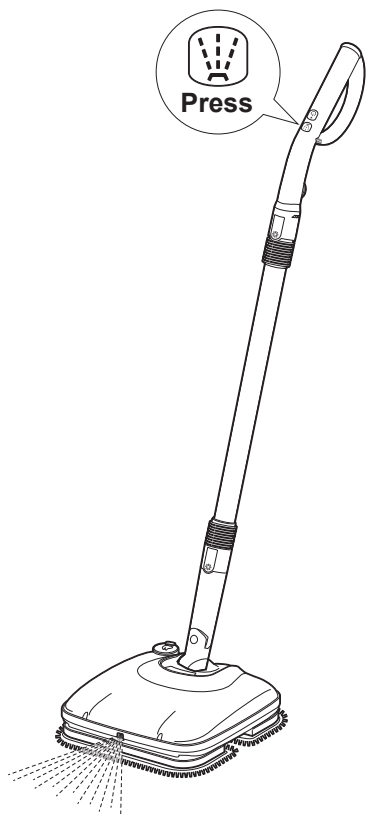
● During operation, if the unit is being charged, operation will stop and it will switch over to charging mode.

It is not possible to operate the product while the battery is charging.

About movements during operation

Nozzle

If the Water spray button is pressed while the power is on, water will get sprayed out of the nozzle.



Battery indicator light

Battery indicator light	Status
	Power remaining in the battery is sufficient
	Indicator lights go out one by one from the right as the power remaining decreases
	If the indicator light on the far left is flashing, there is almost no power remaining in the battery, and operation will stop. ※Be sure to charge the battery.
	When there is no more power remaining in the battery, the battery indicator lights will go out.

About the safety device

This product has a built-in safety setting in order to prevent accidents from occurring due to malfunctioning of the mop head or overheating of the battery. When the power spin board is bearing too much of a burden, the safety device will activate and movement will stop.

- If the safety setting has been activated, stand the swivel up vertically until there is a "clicking" sound, turn off the power, and wait a bit before using again.
- Check to make sure that there is no trash or debris that has gotten stuck in the power spin board. (→P5)

Cleaning and maintenance

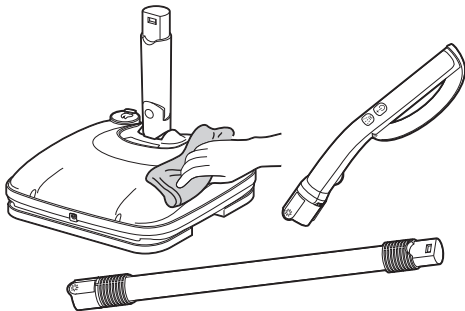


- Before cleaning and maintaining, first stop operation and remove the charging adapter.
- Do not spray with water. Doing so may result in electrical shock, injury or malfunctioning.

- Do not use cleaners, thinners, benzene, bleach, etc.
- Do not use chemically treated dust cloths.

Mop head, Shaft, Operating handle

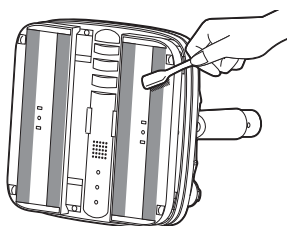
- Refer to the method for removing (P7), and then remove the mop head, the Shaft, and the operating Handle, fully wring out a soft cloth which has been dampened with cool or warm water (no warmer than 40°C), and wipe off any dirt, dust, or stains.
- If there is dirt, dust, or stains which are difficult to remove, first wipe with a soft cloth that has been dampened with a diluted neutral kitchen cleaning agent. Then fully wring out the cloth so that there is no cleaning agent remaining, and use the cloth to wipe off the water.



Pad attachment surface (shaded areas)

If dust or dirt accumulates on the attachment surface of the mop pads, the attachment surface will lose its adhesiveness and the mop pads will come off easily. If dust or dirt accumulates, use a toothbrush or something similar to remove it.

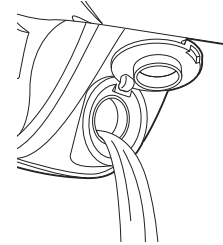
- ※ If there is water in the water reservoir, that water must first be drained out before doing any cleaning and maintaining.



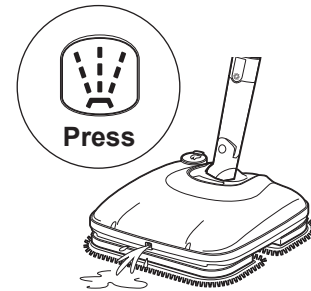
- When holding and moving the mop head with water in the water reservoir, make sure not to tilt. Or the water may spill out and cause malfunctioning.

How to drain the water from the water reservoir

- 1 Open the water reservoir, tilt the mop head, and drain out any water remaining in the water reservoir

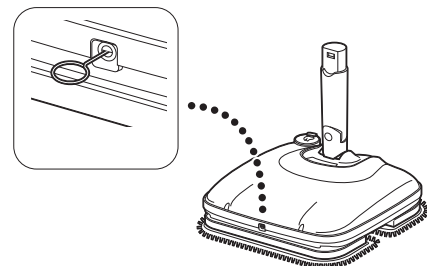


- 2 Press the water spray button several times to get all of the water out



Nozzle

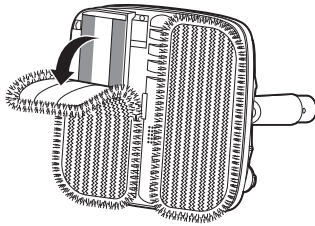
If the nozzle gets clogged up, use the attached pin for cleaning nozzle to clean it out.



Continued→

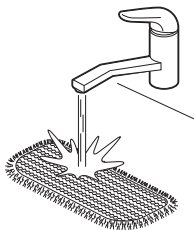
Mop pads

1 Remove the mop pads



2 Rinse the mop pads with water

- Wash your hands using tap water. If there is dirt, dust, or stains which are difficult to clean off, use a neutral cleaning agent.



- ※ Do not use a washing machine. Do not wash together with other laundry.
- ※ Do not rub or knead the mop pads forcefully. Doing so may cause fraying.

3 Remove all the water from the mop pads, and dry it out in the shade

- Remove all the water, and dry out in the shade.
- ※ Do not wring out forcefully.



- Do not use a hairdryer, iron, or drying machine to dry mop pads. Or the heat may cause the mop pads to lose its shape.

About used batteries

- Remove the used battery and take it to the nearest battery recycling location. Do not throw away used batteries as general household waste.
- After removing the battery, use tape to insulate the two ends of the battery connector.



Recycling lithium-ion batteries

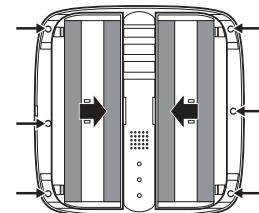


- Used batteries must be recycled. Also, abide by the following.
 - Do not throw away used batteries as general waste.
 - Do not throw used batteries into fire.
 - Do not disassemble.
 - Do not put used batteries in places with high temperatures.
 - Do not use in any other machines or devices.

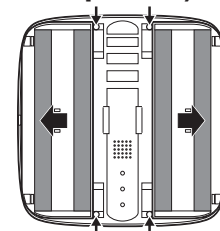
Battery removal

Use up the battery completely before removing it. (Make sure that the power does not come on even if the swivel has been pushed down.)

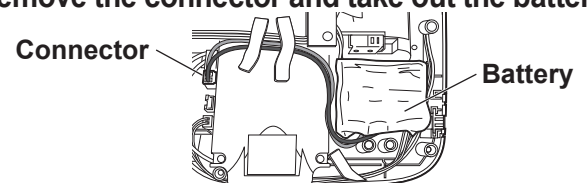
1 Push the vibration surface of the mop inward and remove the screws (there are screws in six places)



2 Push the vibration surface of the mop outward and remove the screws (there are screws in four places)



3 Remove the connector and take out the battery



- After the battery has been removed, do not reconnect it to the mop head. Doing so may cause the battery to leak fluid, heat up, or rupture.

Troubleshooting

If anything abnormal occurs during use, first read this manual carefully and check to see if there are any of the following problems before calling for repairs.

Status	Possible causes	Solutions
Cannot charge	● The charging plug does not firmly plug into the charging port on the mop head	● Make sure that the charging plug is firmly plugged into the charging port on the back of the mop head.
	● The battery is fully charged	● First remove the charging adapter, and then try using.
The power does not turn on	● There is no remaining power	● Make sure to charge the battery before using. (→P8)
	● Connect the charging adapter	● First remove the charging adapter, and then try operating.
Does not move or perform any operations even after pressing the button	● The safety setting is turned on	● Clean out any trash or debris that has gotten stuck in the power spin board. (→P5, 10)
	● The power is "OFF"	● Push down the Swivel on the Mop Head, turn the power to "ON," and press the "start" button.
	● The battery for the button is dead	● Change the battery for the button.
During operation, movements are slow or delayed	● The remaining power in the charger is low	● Make sure to charge the battery before using. (→P8)
	● The mop pads is excessively wet	● Use dry mop pads.
Water does not spray out	● There is no water in the water reservoir	● Fill up Reservoir with water.
	● There is dust, dirt or other trash and debris clogging up the nozzle	● Clean out any trash or debris by using the pin that is for cleaning out the nozzle. (→P11)
Water leaks out	● The Water Reservoir cap is not attached correctly	● Close the water reservoir cap tightly.
Leaves a residue of water on the floor	● The mop pads is dirty ● The mop pads is wet	● Wash the mop pads and dry out before using.
	● The nozzle is spraying out too much water, and the floor is too wet	● Depending on the floor surface you are cleaning, you should increase or decrease the number of times you use the nozzle.

If you still cannot solve the problem even after trying all of the solutions described above, contact the store where you purchased the product, or contact the IRIS customer service center.



● Do not disassemble, repair or modify the product by yourself.

Disposal

● When disposing of this product, first remove the battery and then dispose of the product according to local regulations.

Specifications

Continuous operation time	70 minutes (when operating on 'high' mode)	
Water reservoir capacity	90mL	
Battery	Lithium ion 2-D battery	
Battery capacity	11.1V \approx / 2,200mAh	
Battery lifetime ^{※1}	The battery can be recharged about 300 times	
Rated voltage	11.1V \approx	
Charging power supply (Charging adapter)	Input	100-240V~, 50/60Hz
	Output	15.0V \approx / 450mA
Charging time	About 5 hours (The charging time may be longer depending on how long you use the product for)	
Charging adapter, power cord length	About 1.5m	
Product dimensions	W260×D260×H1150mm (Mop head only)	
Product mass	2.3kg (not including the mop)	
Mop Pads size	Soft pads: 270mm x 115mm Scrubby pads: 305mm x 145mm	
Mop Pads materials	80% polyester, 20% nylon	
Accessories	Charging adapter, measuring cup Soft padss (2 Mop Padss) Scrubby padss (2 Mop Padss) Pin for cleaning the Nozzle	

※1 The Battery lifetime may vary depending on the environment in which it is used, as well as conditions such as the surrounding temperature, frequency of use, etc.

※ Product specifications are subject to change without prior notice.

Warranty and after-sales services

Please make sure to carefully read the following contents.

■ Purchase Receipt

Be sure to request a Purchase Receipt at the retail shop when purchase the product.

The repair fee needs to be paid if you are unable to present a Purchase Receipt. Therefore, you must keep the Purchase Receipt securely.

■ Within the warranty period

Warranty period: Time limit specified by the warranty card (Back cover).

The company will provide free repair as per the "Warranty Provisions" under abnormal operating conditions within the warranty period.

■ Over the warranty period

Please check with retail shop and you will have to pay for related repair expenses. It will be possible to maintain the functions of the product after repair. A certain repair cost will be charged according to customer's requirements.

■ About the remaining period of spares parts

The remaining period of the company's major spare parts is 5 years after stopped production of this product. The spare parts in operation correspond to the spare needed to maintain the functions of parts needed to maintain the functions of the product.

■ About after-sales service

Please check with retail shop for other after-sales issues.